



2A Hopetoun Street Petersham NSW

2  2 

A Stunning inner west jewel, showcasing a sand stone facade, wooden picket fence and a green leafy paved front porch. This terrace is just as beautiful and inviting on the inside and boasts an enviable location with modern inclusions.

Throughout you will find polished wooden floorboards, that new paint smell and double glazed premium wooden windows for a quiet peaceful home environment.

Your first step inside leads to a modern open plan layout spans the ground level with the dining and living spaces separated by an open kitchen fitted out with dark marble stone benches contrasted with sleek white doors, stainless steel dishwasher and gas cooking.

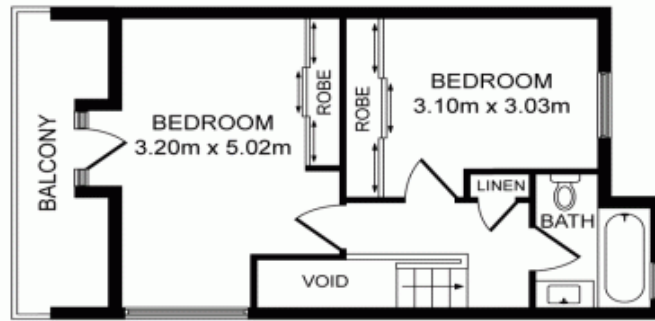
-French double doors expand the dining space into the

Price : \$ 1,305,000

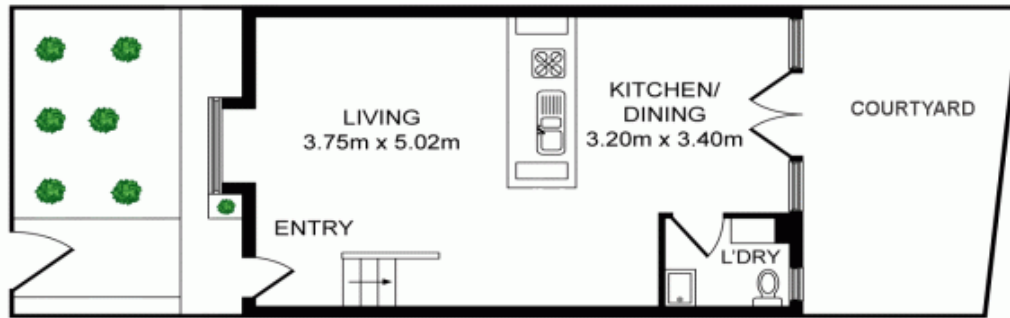
View : <https://www.crystalrealty.com.au/sale/nsw/inner-west/petersham/residential/house/5210944>



May Aoun
0416 027 086



FIRST FLOOR



GROUND FLOOR

2A Hopetoun Street, Petersham

Whilst every attempt has been made to ensure the accuracy of the floor plan contained here, measurements of doors, windows, rooms and any other items are approximate and no responsibility is taken for any error, omission or mis-statement. This plan is for illustration purpose only and should be used as such by any prospective purchaser. The services, systems and appliances shown have not been tested and no guarantee as to their operability or efficiency can be given.

Photos & Floor Plan created by SMT CLICKS

