



**13 Ormond Street PADDINGTON NSW**

**3**  **2** 

Located in one of Paddington's most favoured tree-lined streets.

**View :** <https://www.crystalrealty.com.au/sale/nsw/eastern-suburbs/paddington/residential/terrace/5771773>

A classic Victorian terrace offers a unique opportunity to secure a premier property.

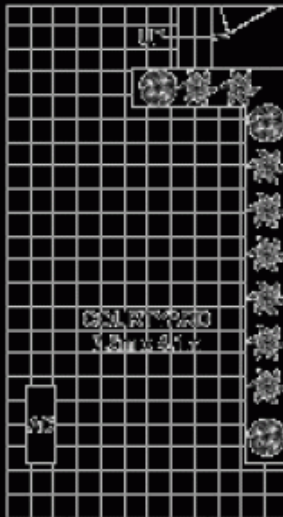
Separate living and dining rooms with fireplaces, set over two levels and stylishly renovated.

Features state of the art modern kitchen opening onto the rear garden courtyard.

Three bedrooms with main including an attic and balcony. Timber flooring, ducted air conditioning, security intercom, internal laundry, 2nd WC plus pedestrian rear lane access.

Within walking distance to Paddington lifestyle, Oxford

REAR LANE ACCESS



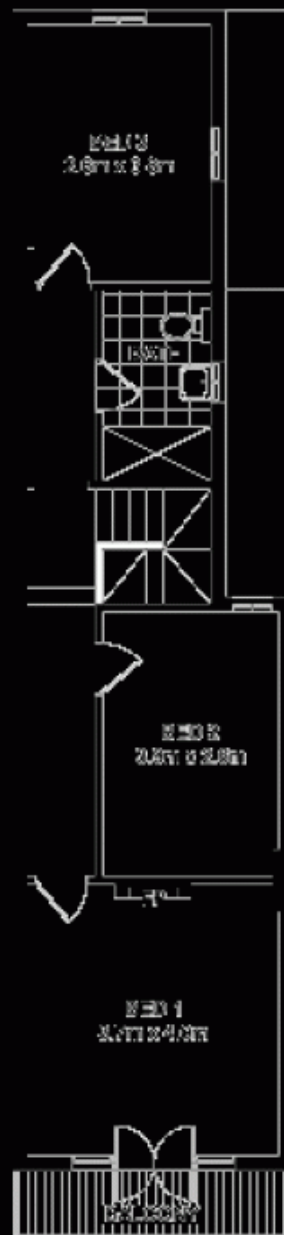
# 13 ORMOND STREET, PADDINGTON

Blueprint by City Real Estate Pty: 1500 760 590

NOT TO BE USED FOR ANY OTHER PURPOSES WITHOUT THE WRITTEN CONSENT OF THE ARCHITECT. ALL DIMENSIONS ARE TO FACE UNLESS OTHERWISE SPECIFIED.



## RESIDENCE



SITE PLAN

OFFICE LEVEL