



10/662 Botany Road ALEXANDRIA NSW

2  1  1 

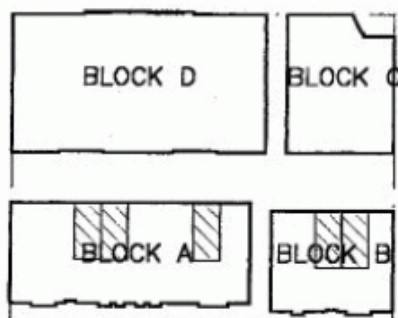
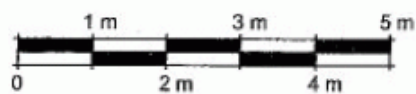
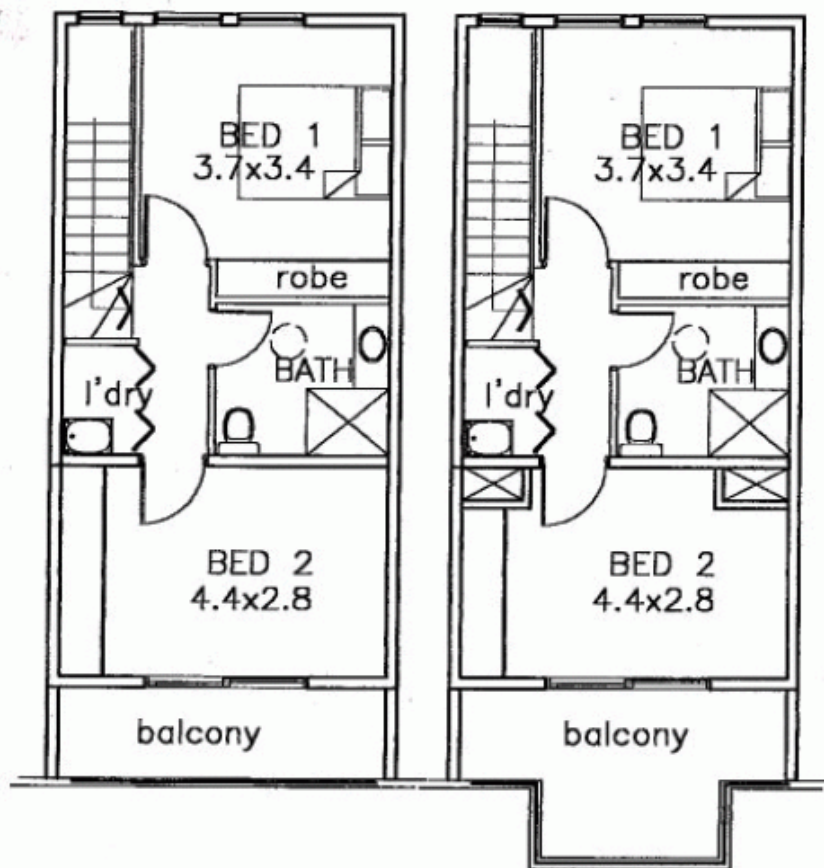
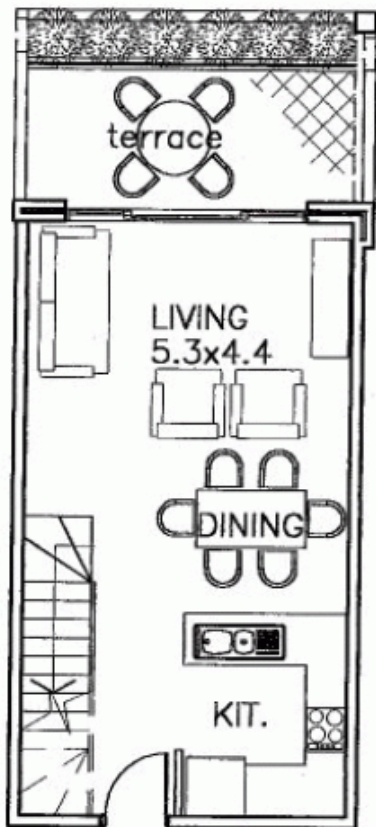
This modern apartment is ideal for the first home buyer looking to settle in their new home.

In a central location the properties features include a modern kitchen and bathroom, carpet throughout, open plan living area, dining and lounge leading onto a balcony, air-conditioning in each room and a security carspace.

Well maintained security building with landscaped gardens. Close to CBD, Mascot Train Station, shops and buses.

Strata: \$777.08 per 1/4 approx.
Council: \$170.62 per 1/4 approx.
Water: \$143.23 per 1/4 approx.

Price : \$ 470,000
Land Size : 98 sqm
View : <https://www.crystalrealty.com.au/sale/nsw/eastern-suburbs/alexandria/residential/apartment/5771795>



Location Key