



4/637 New South Head Road ROSE BAY NSW

2  **1** 

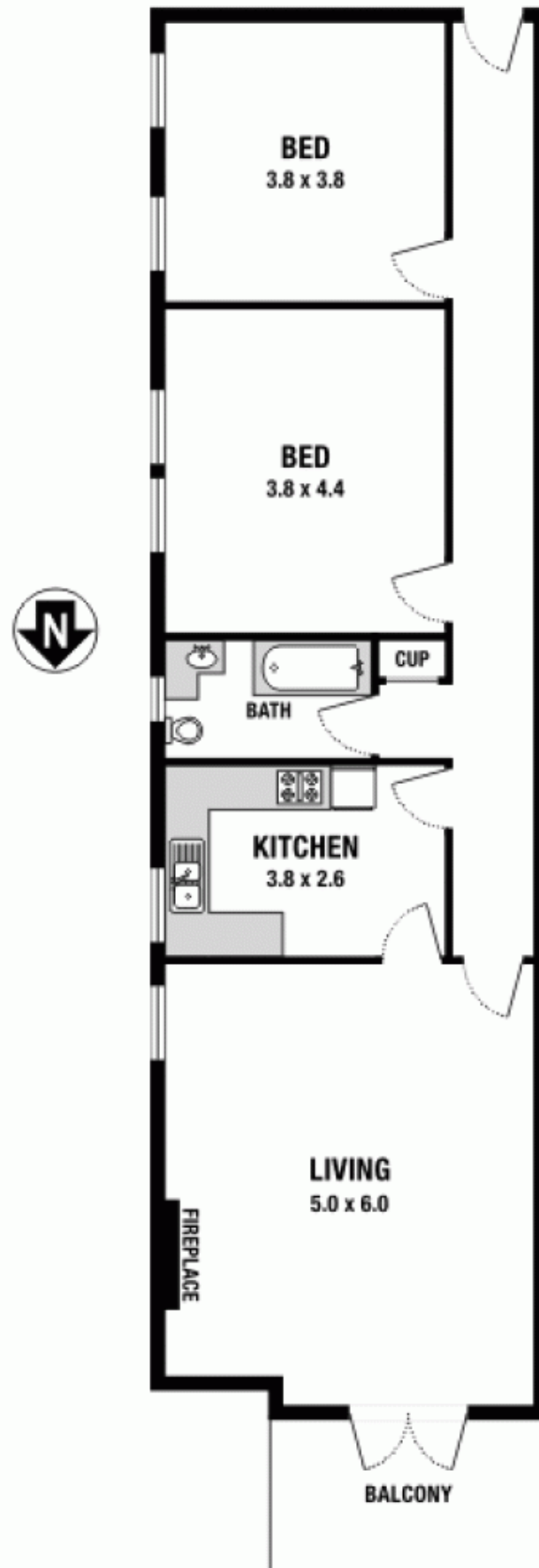
Perfectly positioned opposite Rose Bay's beautiful harbour foreshore and parks is this spacious security two bedroom. This first floor apartment is situated in a well-maintained boutique block of six. Bright and airy interiors with potential to add your own personal touch. Sun filled open plan layout with a well defined living and dining area, opening out onto the balcony with spectacular water views, updated kitchen and bathroom, two double sized bedrooms and internal laundry. Only a short walk to Rose Bay Village shops, cafes, transport, ferries and The Royal Sydney Gold Club.

View : <https://www.crystalrealty.com.au/sale/nsw/eastern-suburbs/rose-bay/residential/apartment/5771810>

A must to inspect!

Water rates: \$150.19 approx. per quarter
Council rates: \$261.65 approx. per quarter
Strata rates: \$790.50 approx. per quarter
TOTAL AREA: 102sqm approx.

4/637 New South Head Road, Rose Bay



Please note: All stated dimensions are approximate only. Particulars given are for general information only and do not constitute any representation on the part of the vendor or agent.