



13 Wells Avenue TEMPE NSW

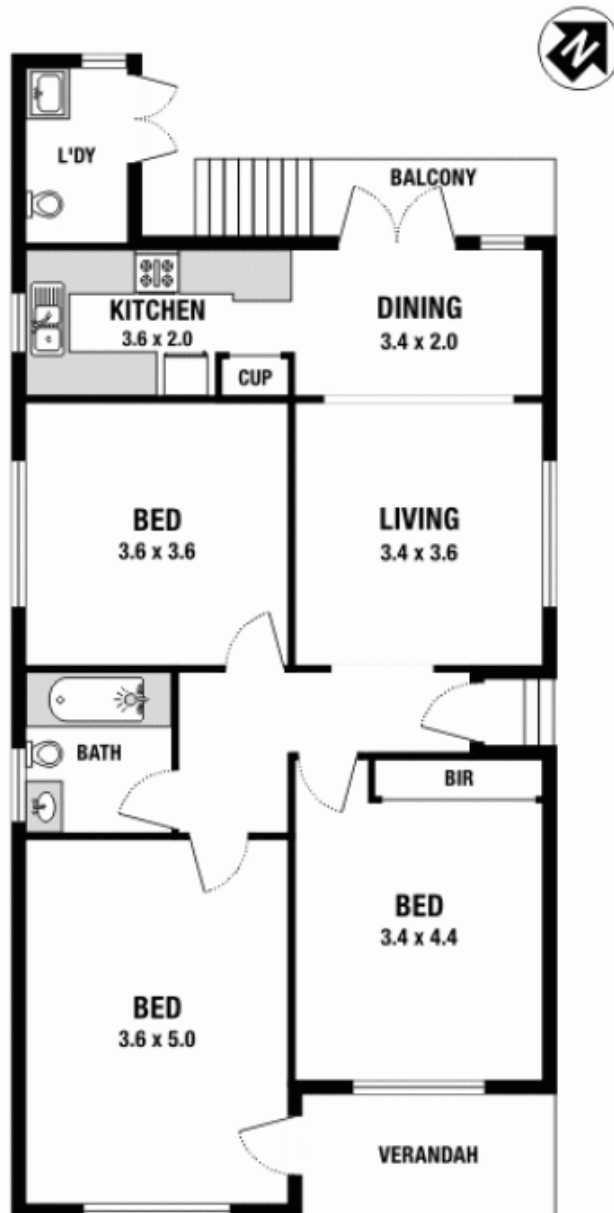
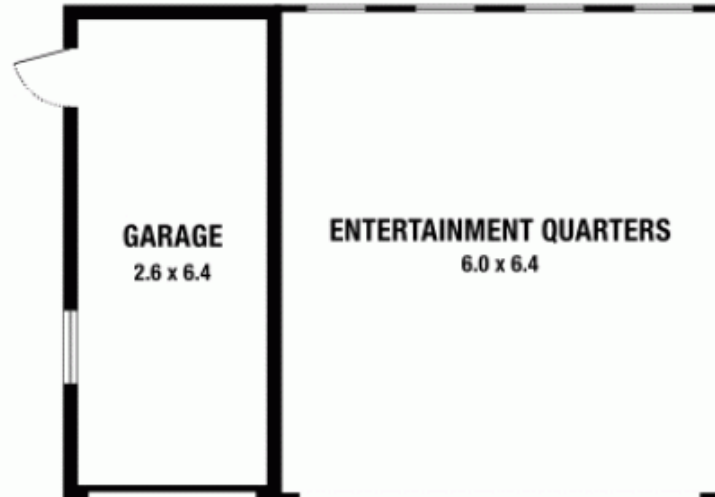
3  1  4 

This warm and inviting double brick free standing Californian Bungalow home offers boundless space and quality features. It occupies 468sqm of land and situated in a cul-de-sac street.

Land Size : 468 sqm
View : <https://www.crystalrealty.com.au/sale/nsw/inner-west/tempe/residential/house/5771816>

- * Open plan living and dining area with abundance of natural light
- * Polished timber floors throughout with high ceilings
- * Modern Kitchen with stainless steel appliances and gas cooking
- * Spacious double bedrooms- 3 with main opening out to a private porch
- * Updated full bathroom
- * External laundry with WC
- * Large outdoor undercover area for entertaining or potential work shop area
- * Lock up garage

13 Wells Street, Tempe



Please note: All stated dimensions are approximate only. Particulars given are for general information only and do not constitute any representation on the part of the vendor or agent.