






337 Belmont Street ALEXANDRIA NSW

3  2  1 

This two storey terrace is located in a much sought after area of Alexandria and is sure to please the growing family or an astute investor wanting to capture prime real estate.

Accommodation consists of three bedrooms, main with large private balcony, built-ins in two rooms, seperate lounge area, open plan modern kitchen with a combined dining room, polished floor boards, internal laundry, paved courtyard for entertaining and parking for a car. It has rear lane access for convenience.

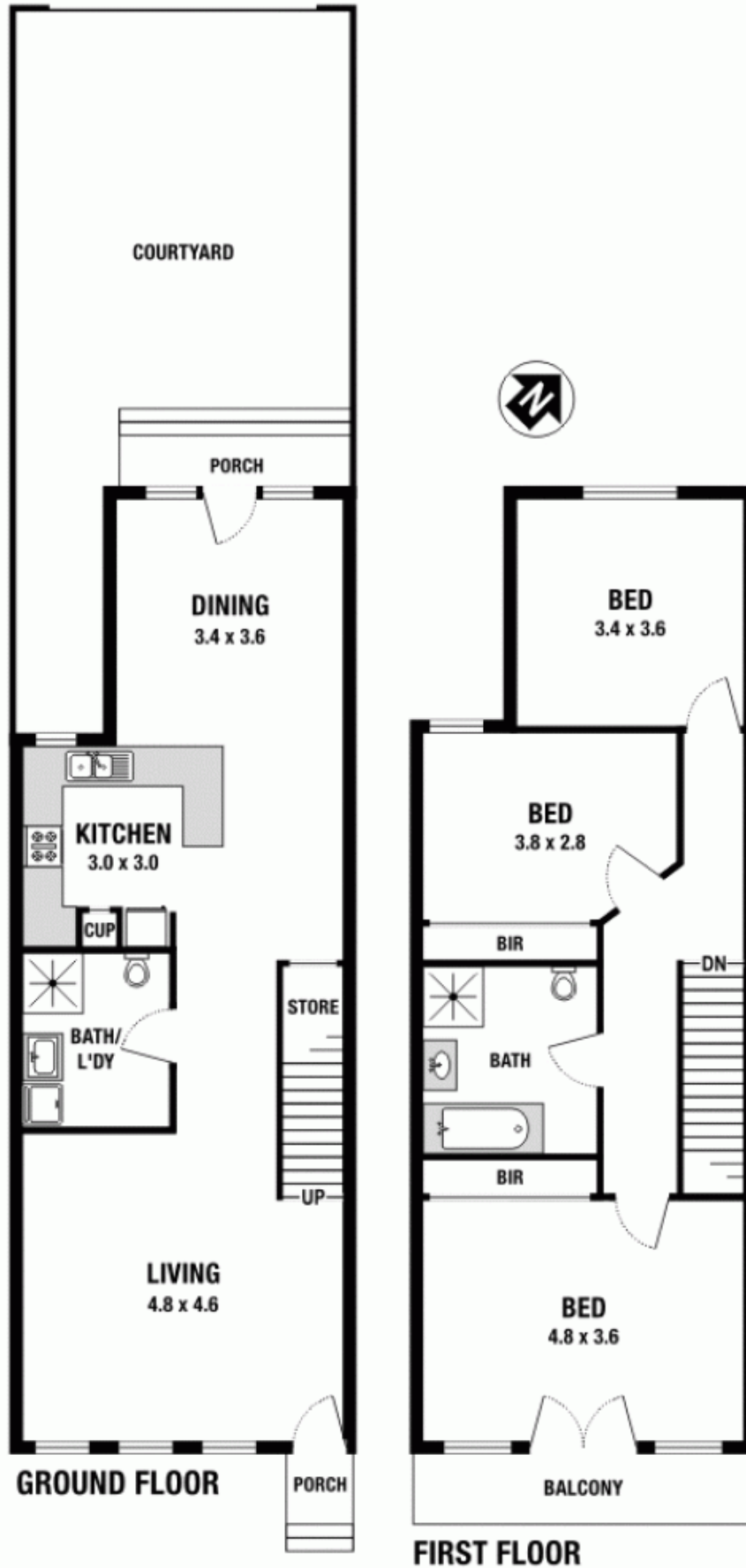
Located only footsteps to Erskineville Village, cafes, schools, public transport and CBD.

A must to inspect!

Council: \$254.00 per 1/4 approx

Land Size : 211 sqm
View : <https://www.crystalrealty.com.au/sale/nsw/eastern-suburbs/alexandria/residential/terrace/5771827>

337 Belmont Street, Alexandria



Please note: All stated dimensions are approximate only. Particulars given are for general information only and do not constitute any representation on the part of the vendor or agent.