



62 Wardell Road PETERSHAM NSW

2  1 

This charming semi-detached home is ideal for the first time home buyer or serious investor wanting to capture prime real estate in the Inner west. Enjoy lifestyle and convenience at your doorstep.

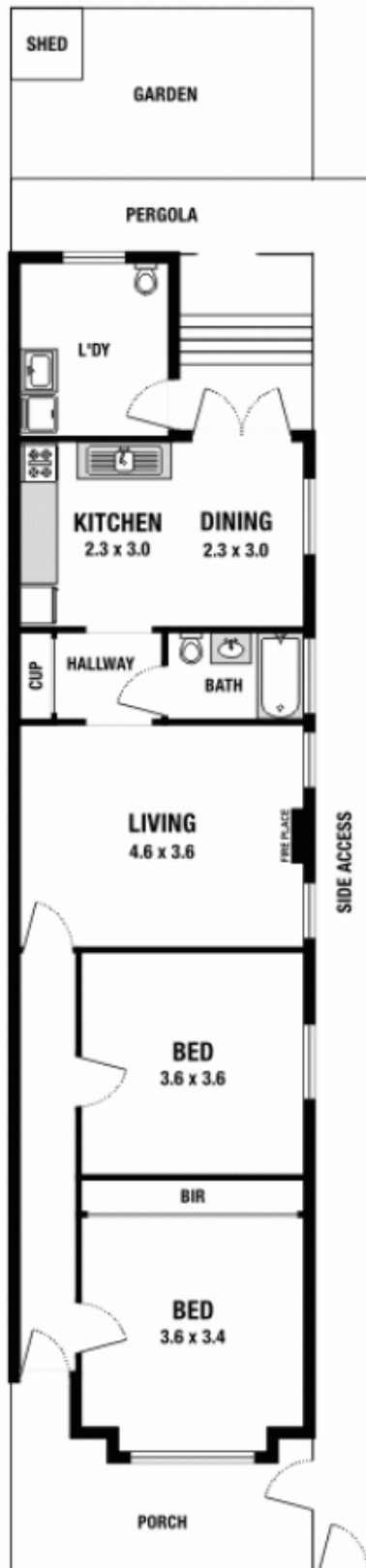
Land Size : 244 sqm
View : <https://www.crystalrealty.com.au/sale/nsw/inner-west/petersham/residential/semi-detached/5771831>

Accommodation consists of two double sized bedrooms, main with wall to wall built-in, separate lounge room, original kitchen with combined dining, polished floorboards throughout, laundry with WC, attic storage, undercover area with private court garden which is ideal for entertaining or sit back and relax with your family and friends.

Stroll to cafes, restaurants, shops, public transport, nearby Marrickville Metro, and close proximity to CBD.

Size: 244sqm approx

62 Wardell Road, Petersham



Please note: All stated dimensions are approximate only. Particulars given are for general information only and do not constitute any representation on the part of the vendor or agent.