



38 Maxwells Avenue ASHCROFT NSW

3  1  1 

This tidy 3 bedroom single level family home is set on level land of approximately 569 sqm. Ideal for young families, investors and developers (R3 zoning), it also offers:

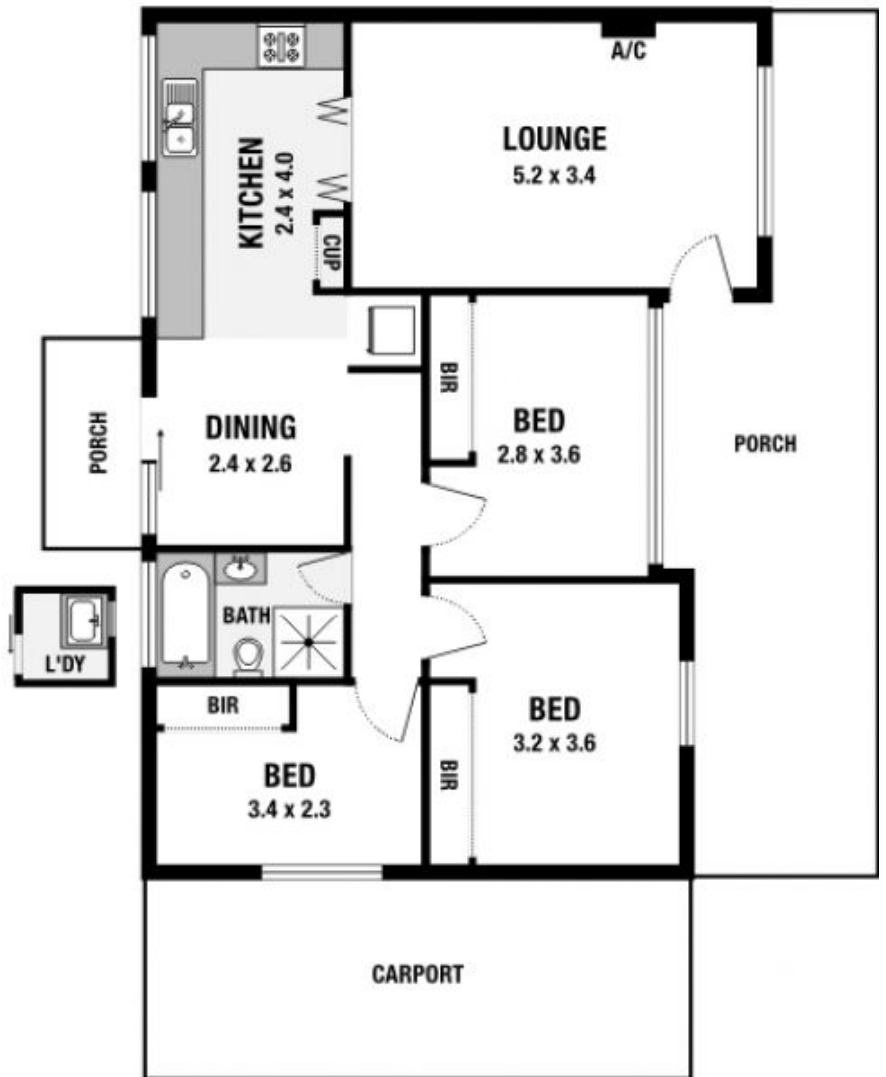
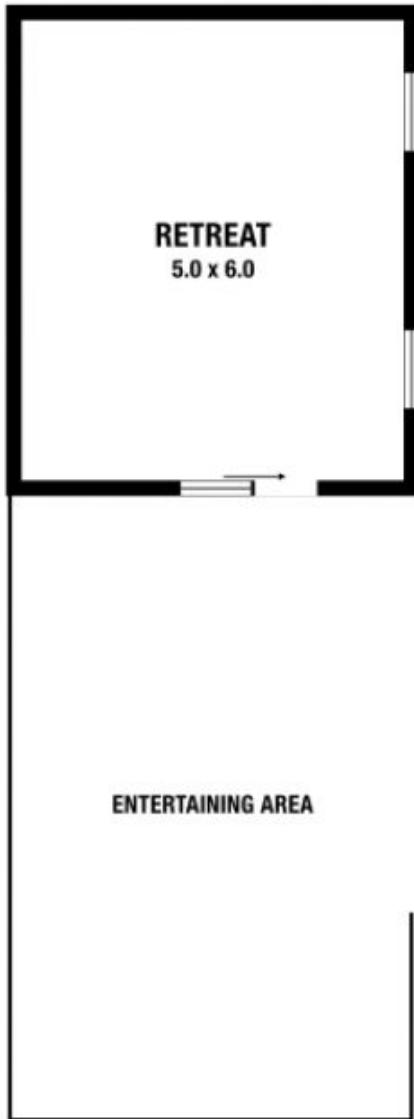
Land Size : 569 sqm
View : <https://www.crystalrealty.com.au/sale/nsw/liverpool-fairfield/ashcroft/residential/house/5771841>

- Front and rear yards
- Gas cooking
- Built-in-robos in all three bedrooms
- Separate lounge and dining
- Covered porch
- Pav Lehmann Oval adjacent to the property

Proximity to amenities:

- 750m to Ashcroft Public School, Sheriff St
- 800m to Ashcroft High School, Maxwells Ave
- 2.6Km to Westfield Liverpool, Elizabeth Drive
- 2.8Km to Liverpool Hospital, Elizabeth Drive

38 Maxwells Avenue, Ashcroft



Please note: All stated dimensions are approximate only. Particulars given are for general information only and do not constitute any representation on the part of the vendor or agent.