



**235 Croydon Road CROYDON NSW**

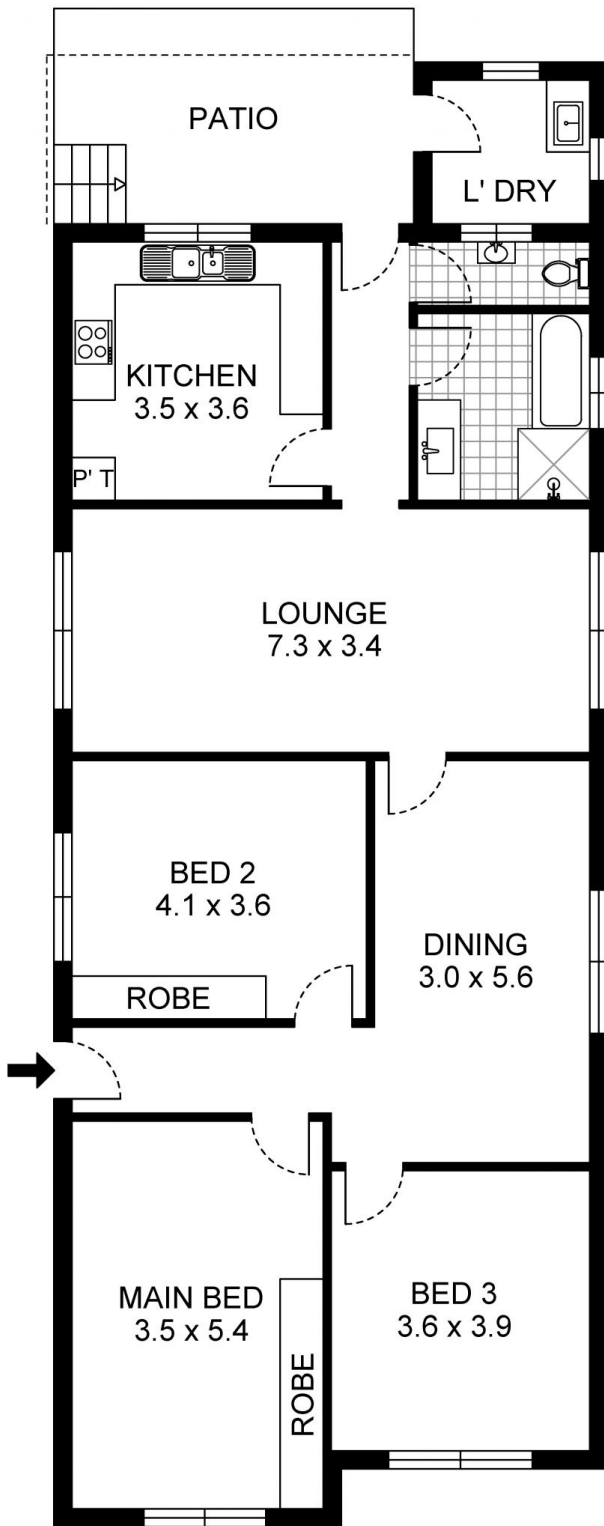
3  1 

This period home offers spacious interiors accented by the appealing characteristics of yesteryear including high ceilings, ornate cornices and timber fretwork. Three massive bedrooms, separate formal dining and lounge, generous modern kitchen and covered entertaining patio over a vast paved garden comprise the floor plan. Enjoy the summer months with alfresco dining. Seize the many possibilities offered by this comprehensive home as the residence is in fantastic condition with exciting scope to revision or even re-develop (STCA). Placed close to Croydon station, good schools and "The Strand" shopping precinct.

**Land Size** : 405 sqm  
**View** : <https://www.crystalrealty.com.au/sale/nsw/inner-west/croydon/residential/house/5771848>

**Features**

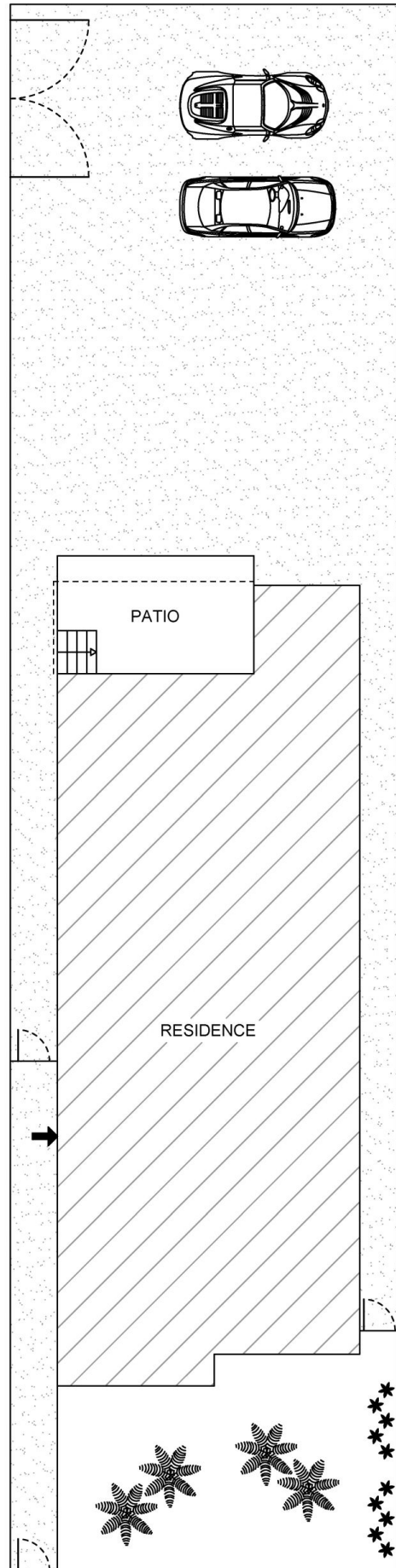
- Double brick construction with front lawns and mature hedges
- Generous interiors enhanced by period features and



GROUND FLOOR

**235 Croydon Road, Croydon**

PLEASE NOTE:  
THIS PLAN HAS BEEN PROVIDED BY REALPHOTO FOR  
MARKETING PURPOSES ONLY. NO RELIANCE SHOULD  
BE PLACED ON THIS PLAN FOR CONSTRUCTION OR  
DEMOLITION PURPOSES. REALPHOTO 0405 682 225  
WWW.REALPHOTO.NET.AU



SITE PLAN