



22 Devine Street ERSKINEVILLE NSW

3  1  1 

Bordering 3 fantastic suburbs you will find this tri-level townhouse in a quiet street.

Consisting of 3 bedrooms, open plan living and a lock up garage, this property is sure to tick all the boxes.

Features include: Bathroom with bathtub, Internal laundry, neat and tidy kitchen, Courtyard, balcony off main bedroom and internal access to the garage.

This townhouse is within walking distance to the buzzing King St along with its shops, cafes and transport and also the great Sydney Park.

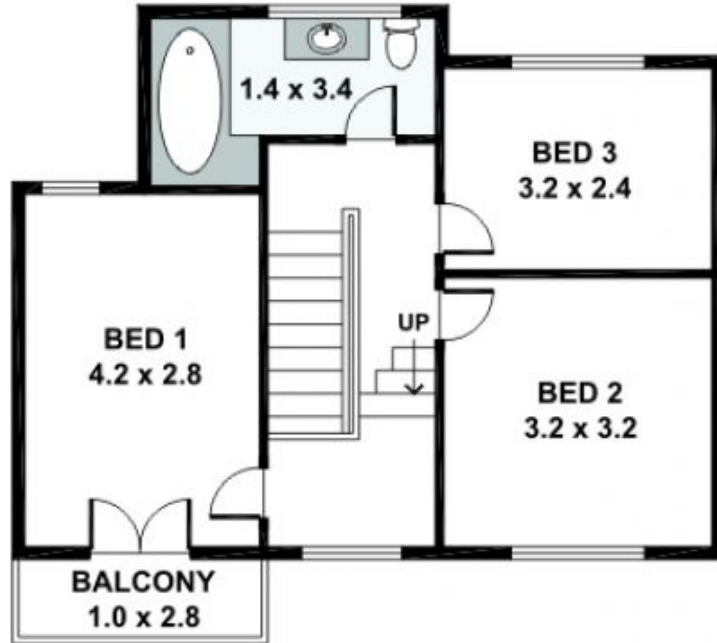
Great for Investors or your new home!

View : <https://www.crystalrealty.com.au/sale/nsw/inner-west/erskineville/residential/townhouse/5771857>

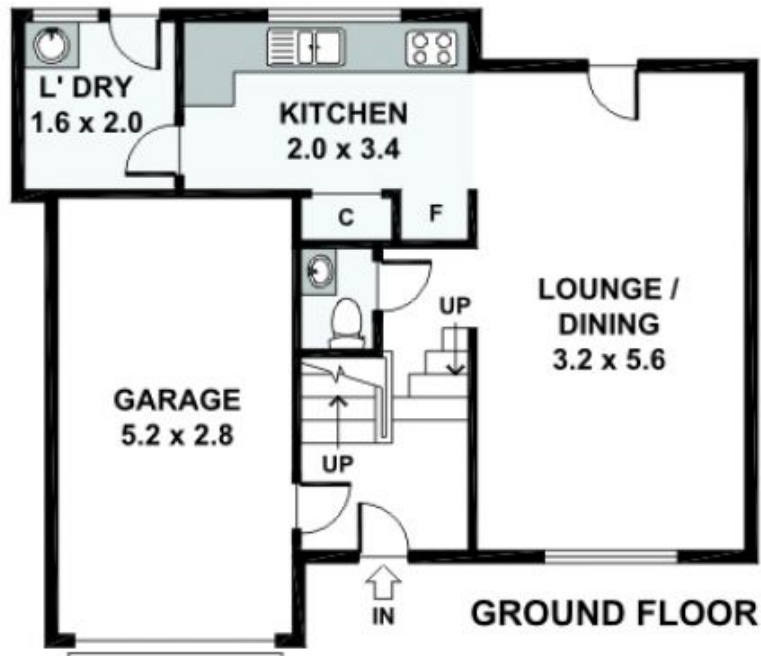


Angela Lytsioulis
0295194644

22 Devine Street, Erskineville



FIRST FLOOR



GROUND FLOOR

Please note: All stated dimensions are approximate only. Particulars given are for general information only and do not constitute any representation on the part of the vendor or agent.