



### 356 Wilson Street Darlington NSW

2  2 

DARLINGTON, a suburb that speaks for itself.

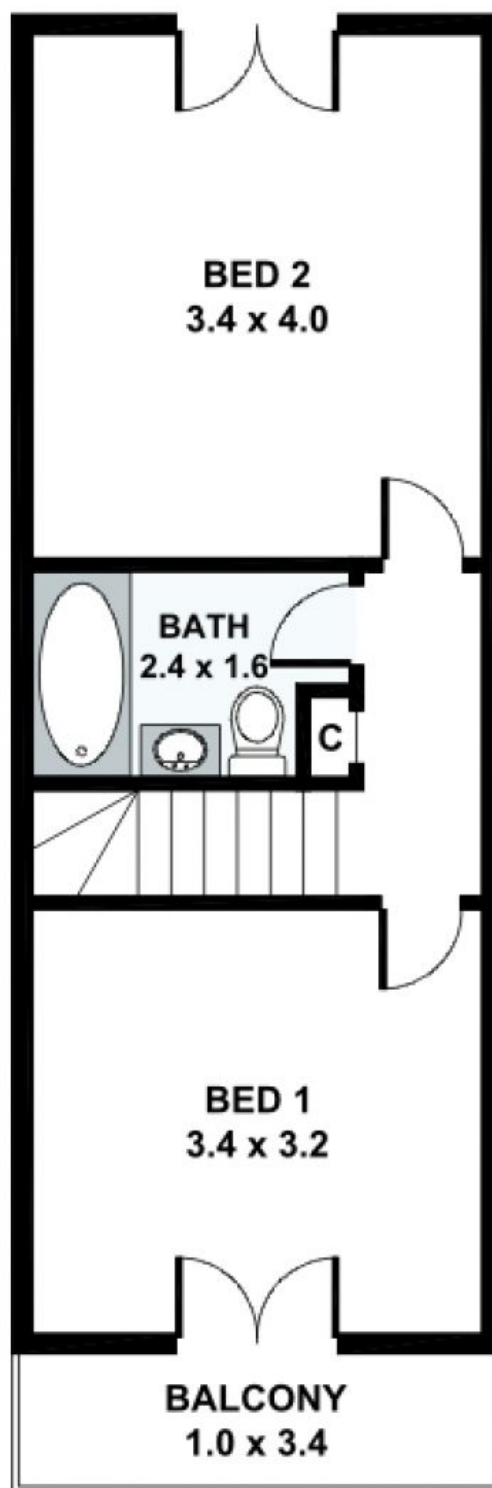
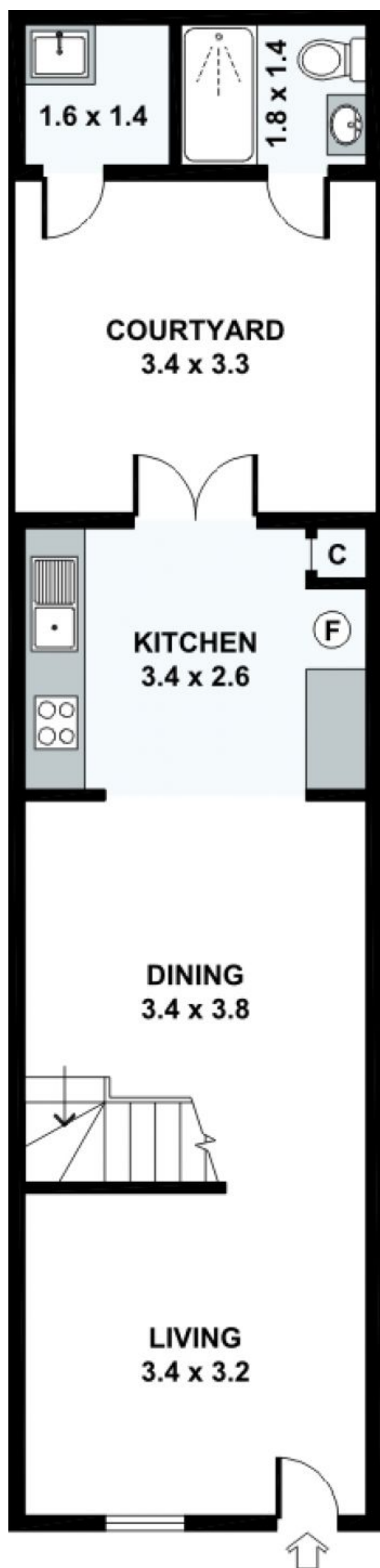
This property gives you the perfect opportunity to enter the Inner City market. With ample room for improvement, this double storey, two bedroom terrace with courtyard and balcony is ripe for the picking.

This terrace is located close to Cosmopolitan Newtown and Erskineville, accross the road from Everleigh Markets and Carriage Works, and within walking distance to the cafes on Abercrombie Street, Sydney University, Redfern and MacDonaltdown Stations.

**View** : <https://www.crystalrealty.com.au/sale/nsw/eastern-suburbs/darlington/residential/terrace/5771863>



**Angela Lytsioulis**  
0295194644



FIRST LEVEL