






## 8 Ash Street Georges Hall NSW

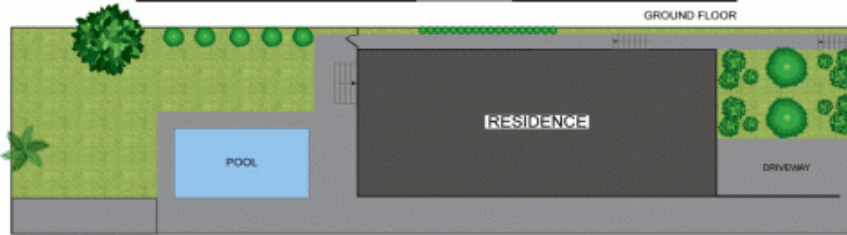
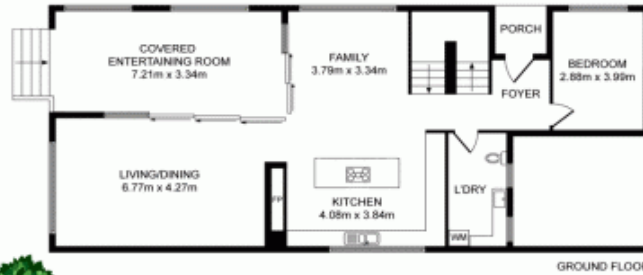
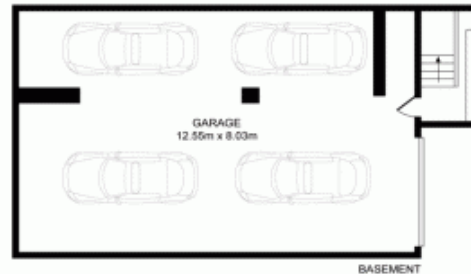
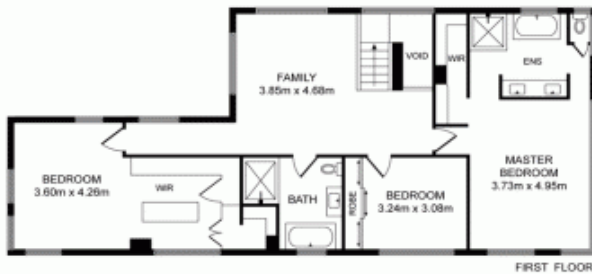
4  3  4 

Stylish contemporary interiors, superior quality finishes and a design that celebrates entertaining makes this striking home the ultimate family entertainer. Spanning two designer levels and flooded with natural light, it features an expansive open plan living/dining area as well as a gourmet chef's kitchen with state-of-the-art appliances and an integrated fridge/freezer. Bi-fold doors allow an effortless flow to the outdoors where there is a superb covered alfresco area followed by lush landscaped gardens and a sparkling saltwater swimming pool. Accommodation comprises four well scaled bedrooms, the master features a boutique-style walk-in wardrobe and a chic ensuite. Further highlights include a fully tiled main bathroom plus an internal laundry with an additional w/c, ducted air conditioning, ducted vacuum, CCTV security and an alarm system. The residence is complete with internal access to secure basement four car parking and extensive storage.

**Land Size** : 500 sqm  
**View** : <https://www.crystalrealty.com.au/sale/nsw/canterburybankstown/georges-hall/residential/house/6013744>



**May Aoun**  
**0416 027 086**



## 8 Ash Street, Georges Hall

Whilst every attempt has been made to ensure the accuracy of the floor plan contained here, measurements of doors, windows, room and any other items are approximate and no responsibility is taken for any error, omission or mis-statement. This plan is for illustration purpose only and should be used as such by any prospective purchaser. The service, systems and appliances shown have not been tested and no guarantee as to their operability or efficiency can be given.

Photos & Floor Plan created by SMT Clicks | 0478 099 674

