

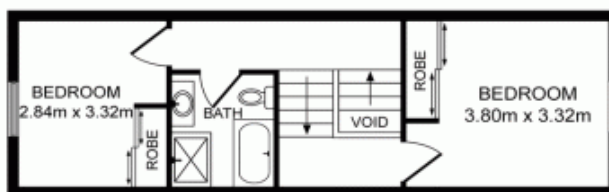


**18C Sadlier Crescent Petersham NSW**

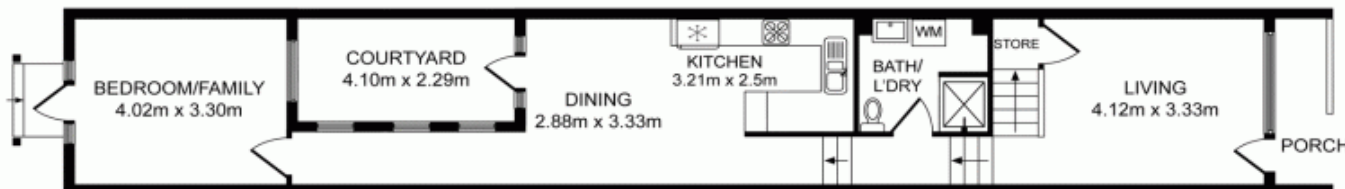
**3**  **2** 

Exceptionally located in the heart of Petersham within a stroll of vibrant shops and eateries, this solid full brick terrace ensures an idyllic urban lifestyle of space and easycare comfort. Renovated for modern family living while exuding character and charm, it features a clever free flowing design offering separate lounge/dining areas enhanced by polished timber floorboards and leadlight windows. There is a well equipped modern gas kitchen, while interiors extend to an undercover central courtyard as well as a second rear courtyard ideal for entertaining. Accommodation comprises three well proportioned bedrooms, the two upper level bedrooms are appointed with built-in wardrobes and split-cycle air conditioning. Further highlights include two fully tiled bathrooms, an internal laundry, split-cycle air conditioning on the lower level and downlights throughout.

**Land Size** : 115 sqm  
**View** : <https://www.crystalrealty.com.au/lease/nsw/inner-west/petersham/residential/terrace/6363914>



FIRST FLOOR



GROUND FLOOR



SITE PLAN (NOT TO SCALE)

## 18C Sadler Crescent, Petersham

Whilst every attempt has been made to ensure the accuracy of the floor plan contained here, measurements of doors, windows, room and any other items are approximate and no responsibility is taken for any error, omission or mis-statement. This plan is for illustration purpose only and should be used as such by any prospective purchaser. The service, systems and appliances shown have not been tested and no guarantee as to their operability or efficiency can be given.

Photos & Floor Plan created by SMI Clicks | 0478 099 674

