



55 Probert Street Camperdown NSW

2  1 

Set in a peaceful leafy street footsteps to the heart of Camperdown, this well-presented semi promises an enviable urban lifestyle while offering exciting potential. It features an original free-flowing layout with combined living/dining areas extending to a sun washed courtyard ideal for entertaining. There is a spacious gas kitchen with a breakfast bar, while accommodation comprises two well-sized bedrooms enhanced by high patterned ceilings and a classic fireplace fixture. Additional features include a skylit bathroom with a combined bath and shower, an internal laundry and timber floorboards. Explore the potential to capitalise on its sought-after address with rear lane access and scope for parking (STCA).

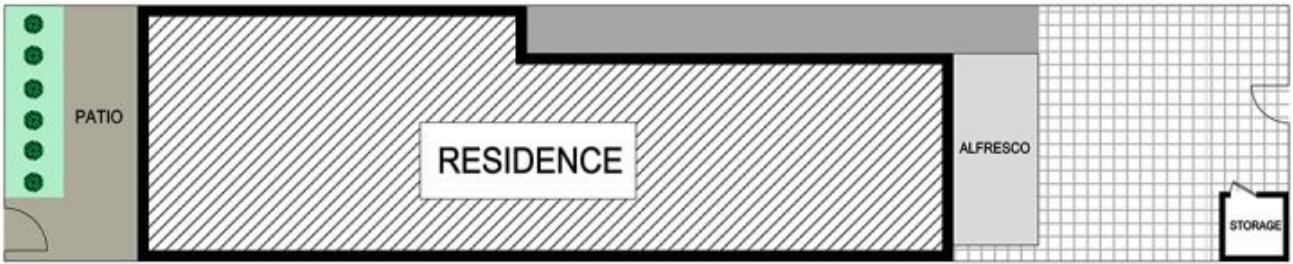
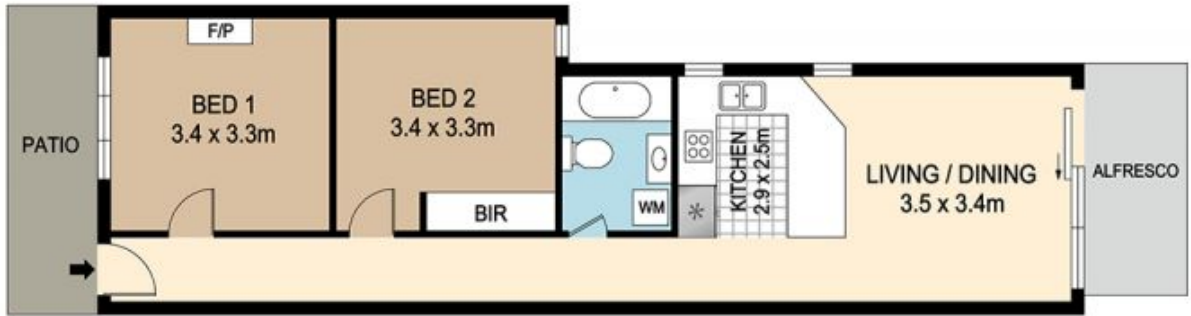
Type : House
Price : \$ 1,515,000
Land Size : 114 sqm
View : <https://www.crystalrealty.com.au/sale/nsw/inner-west/camperdown/residential/house/6850655>

? Original free-flowing layout with combined living/dining

[For full version visit the website](#)



May Aoun
0416 027 086



55 PROBERT STREET, CAMPERDOWN

DISCLAIMER : PLANS SHOWN ARE FOR MARKETING PURPOSES ONLY. ALL DIMENSIONS ARE APPROXIMATE AND NOT TO SCALE. THEY ARE SUBJECT TO ERRORS AND INACCURACIES AND NO LIABILITY WILL BE ACCEPTED. INTERESTED PARTIES SHOULD MAKE THEIR OWN INQUIRES.

