



15/11 Church Street Ashfield NSW

1  1 

Presenting an outstanding first home or investment opportunity in a well-maintained building, this recently updated studio overdelivers in terms of modern comfort, lifestyle and convenience in a walk-to-everywhere location.

Beautifully presented and ready to enjoy, it features designated living/dining enhanced by floating timber floorboards and fresh neutral décor. A zoned bedroom is appointed with a built-in wardrobe, while there is a streamlined kitchen with stainless steel appliances plus a bright and airy bathroom and shared laundry facilities.

It boasts a prime position in a burgeoning inner-west address, within a stroll of shops and popular eateries, parks and buses, while minutes to Ashfield Station.

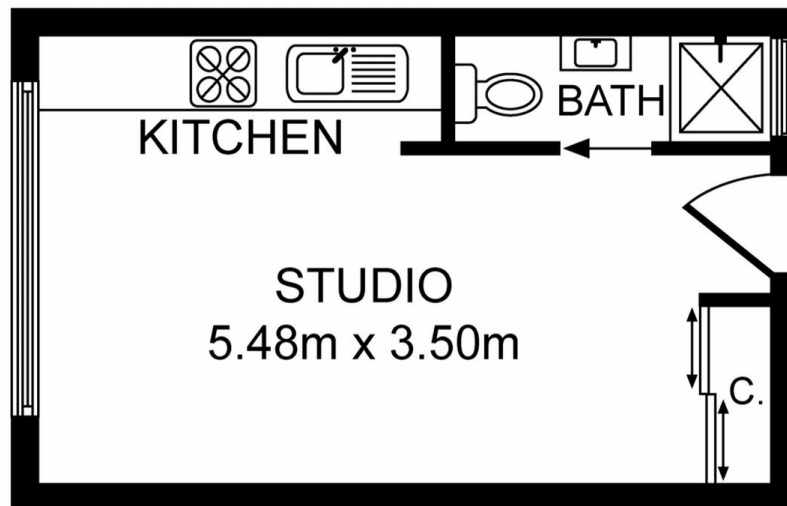
? Designated living/dining and bedrooms zones bathed in

Price : \$ 275,000

View : <https://www.crystalrealty.com.au/sale/nsw/inner-west/ashfield/residential/apartment/7524517>



May Aoun
0416 027 086



15/11 Church St, Ashfield NSW 2131

Whilst every attempt has been made to ensure the accuracy of the floor plan contained here, measurements of doors, windows, room and any other items are approximate and no responsibility is taken for any error, omission or mis-statement. This plan is for illustration purpose only and should be used as such by any prospective purchaser. The service, systems and appliances shown have not been tested and no guarantee as to their operability or efficiency can be given.

Photos & Floor Plan created by SMT Clicks | 0478 099 674

