






### 45A Napoli Street Padstow NSW

4  3  2 

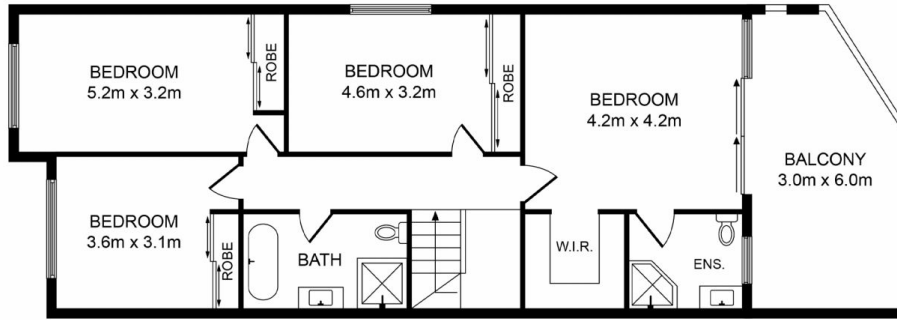
Beautifully appointed interiors, stylish finishes and superb alfresco spaces all combine to provide a readymade family home in this brick contemporary duplex. Designed with a focus on effortless living and entertaining, it reveals light filled open plan lounge and dining areas enjoying a seamless transition to a child-friendly level backyard. The deluxe stone island kitchen is equipped with premium integrated appliances and a breakfast bar, while accommodation comprises four upper level bedrooms, all of which are appointed with built-in wardrobes. The main bedroom features a walk-in wardrobe and a chic ensuite, while opening to a sunlit balcony. Further highlights include a lower level study, zoned ducted air conditioning, luxury appointed bathrooms plus internal access to a lock-up garage and additional parking.

**Price** : \$ 1,245,000  
**Land Size** : 326 sqm  
**View** : <https://www.crystalrealty.com.au/sale/nsw/canterburybankstown/padstow/residential/semi-detached/7617766>

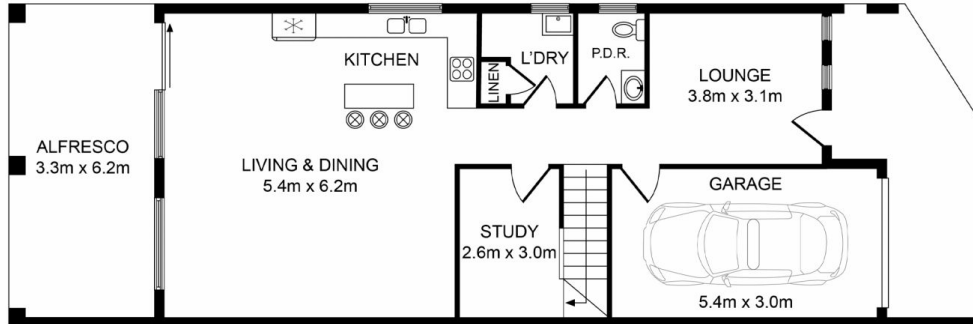


**May Aoun**  
**0416 027 086**

? Striking open plan living and dining bathed in natural light



FIRST FLOOR



GROUND FLOOR

### 45A Napoli St, Padstow NSW 2211

Whilst every attempt has been made to ensure the accuracy of the floor plan contained here, measurements of doors, windows, room and any other items are approximate and no responsibility is taken for any error, omission or mis-statement. This plan is for illustration purpose only and should be used as such by any prospective purchaser. The service, systems and appliances shown have not been tested and no guarantee as to their operability or efficiency can be given.

Photos & Floor Plan created by SMT Clicks | 0478 099 674

