




### 37B Beale Street Georges Hall NSW

5  3  2 

Flawless craftsmanship, cutting-edge bespoke aesthetic and a sun bathed entertainer's backyard all combine to deliver an idyllic family sanctuary in this brand-new full brick architectural duplex.

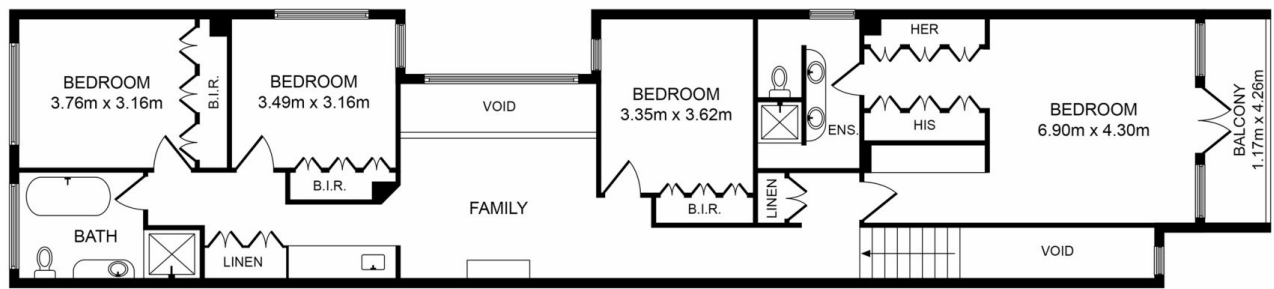
The homes luxury design elements have been meticulously sourced and are of premium quality. Soaring ceilings and European Oak flooring define stylish living and dining zones, while exquisite custom joinery, natural stone and Parisi tapware are showcased throughout.

A striking open plan living/dining area is both a refined space for relaxation and entertaining, while connoisseurs will adore the gourmet island kitchen complete with smart stone benchtops, quality Ilve gas appliances and a butler's pantry.

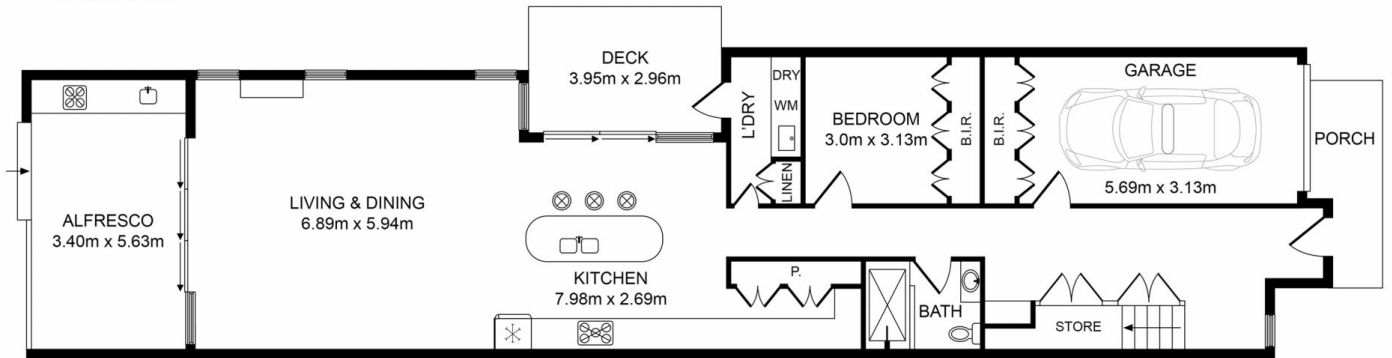
**Land Size** : 370 sqm  
**View** : <https://www.crystalrealty.com.au/sale/nsw/canterburybankstown/georges-hall/residential/house/7694937>



**May Aoun**  
**0416 027 086**



FIRST FLOOR



GROUND FLOOR

### 37B Beale St, Georges Hall NSW 2198

Whilst every attempt has been made to ensure the accuracy of the floor plan contained here, measurements of doors, windows, room and any other items are approximate and no responsibility is taken for any error, omission or mis-statement. This plan is for illustration purpose only and should be used as such by any prospective purchaser. The service, systems and appliances shown have not been tested and no guarantee as to their operability or efficiency can be given.

Photos & Floor Plan created by SMT Clicks | 0478 099 674

